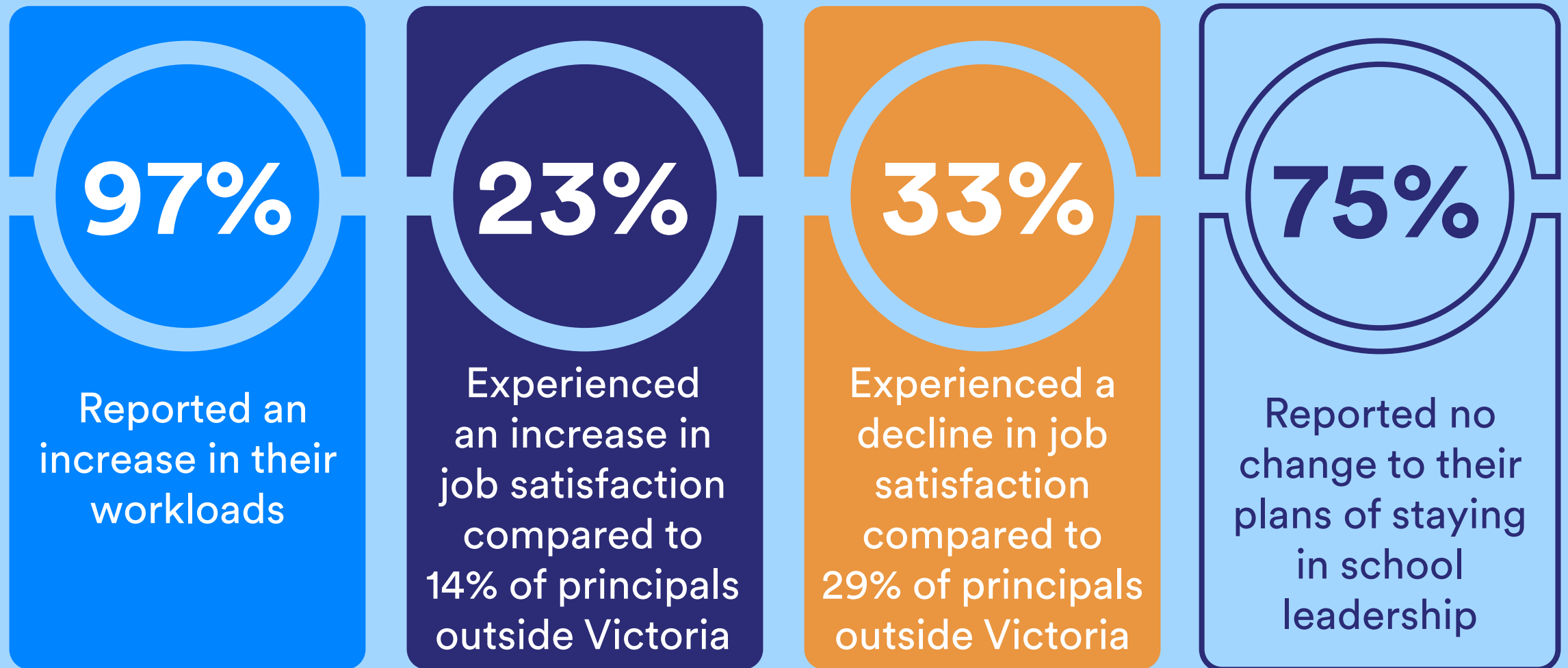


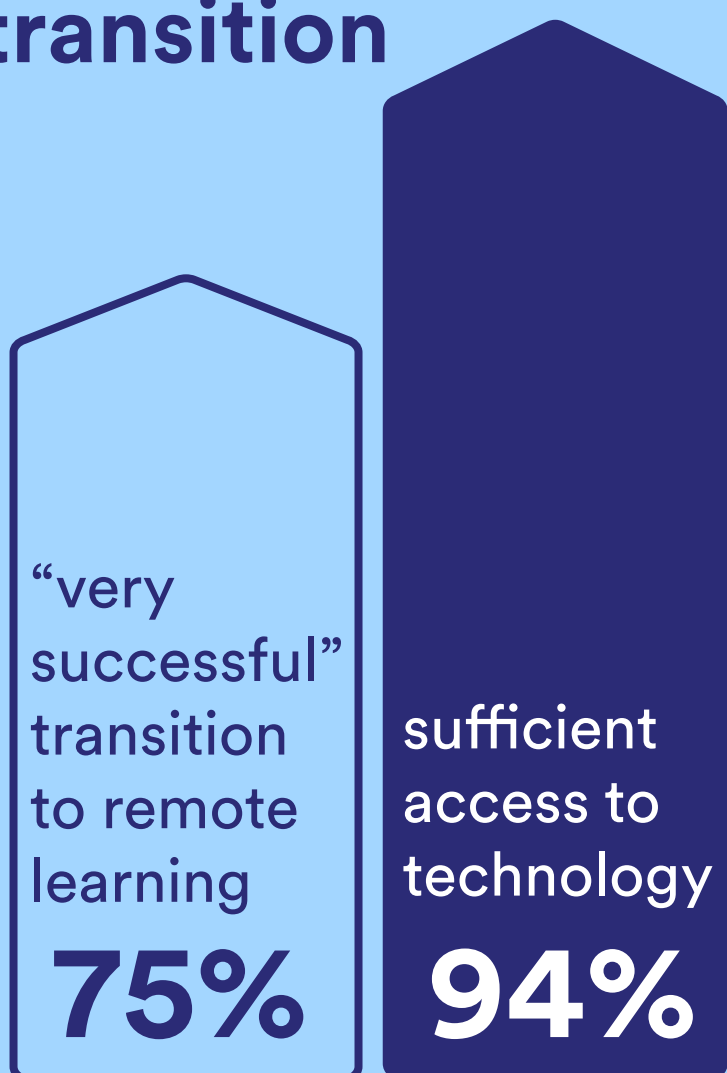
# Impact of COVID-19 on Victorian Schools

Pivot Professional Learning in partnership with the Coalition of Australian Principals surveyed 105 Victorian principals and school leaders in 2020 with the aim of understanding the shifting landscape of school leadership during the pandemic.

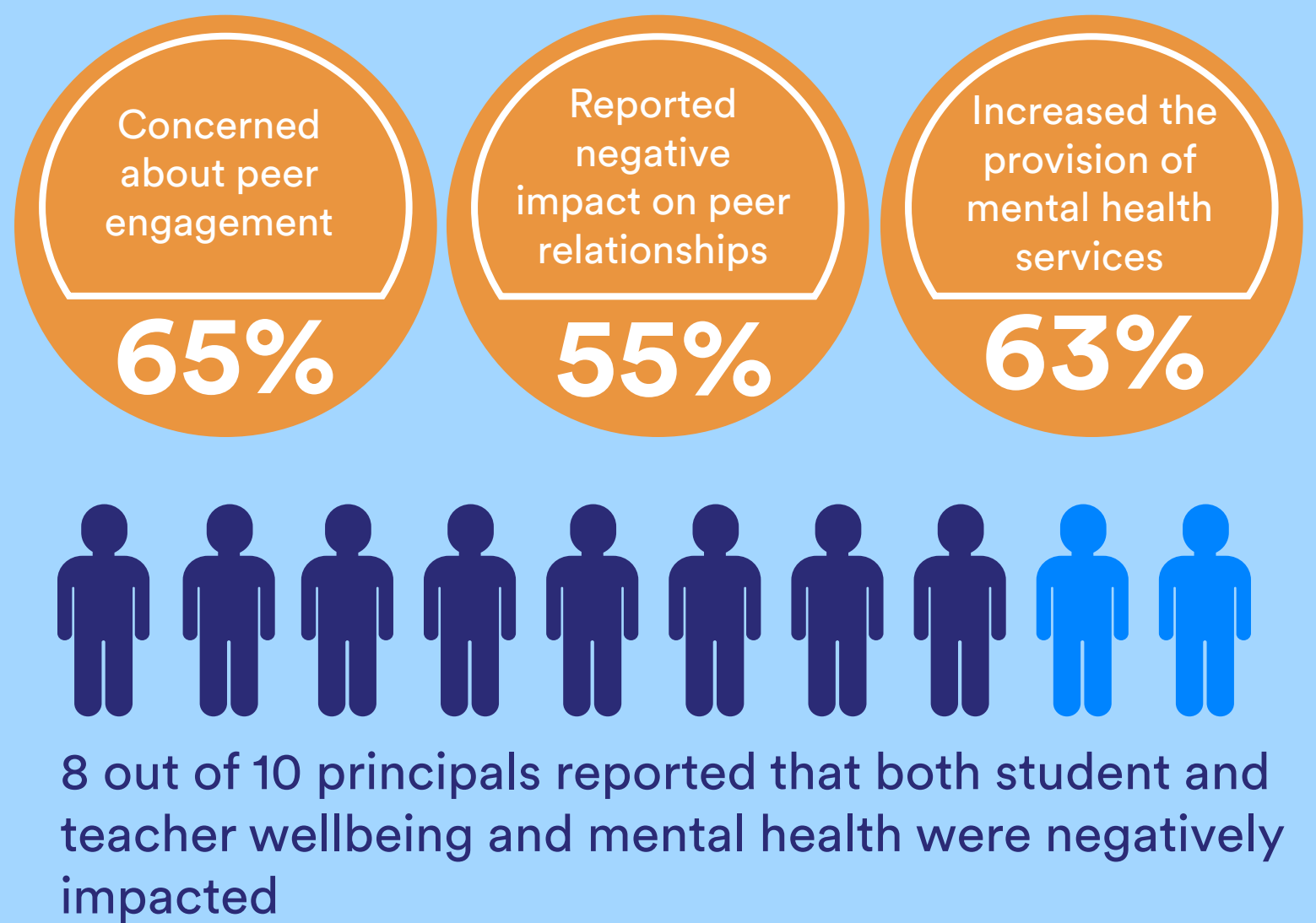
## Job satisfaction of principals



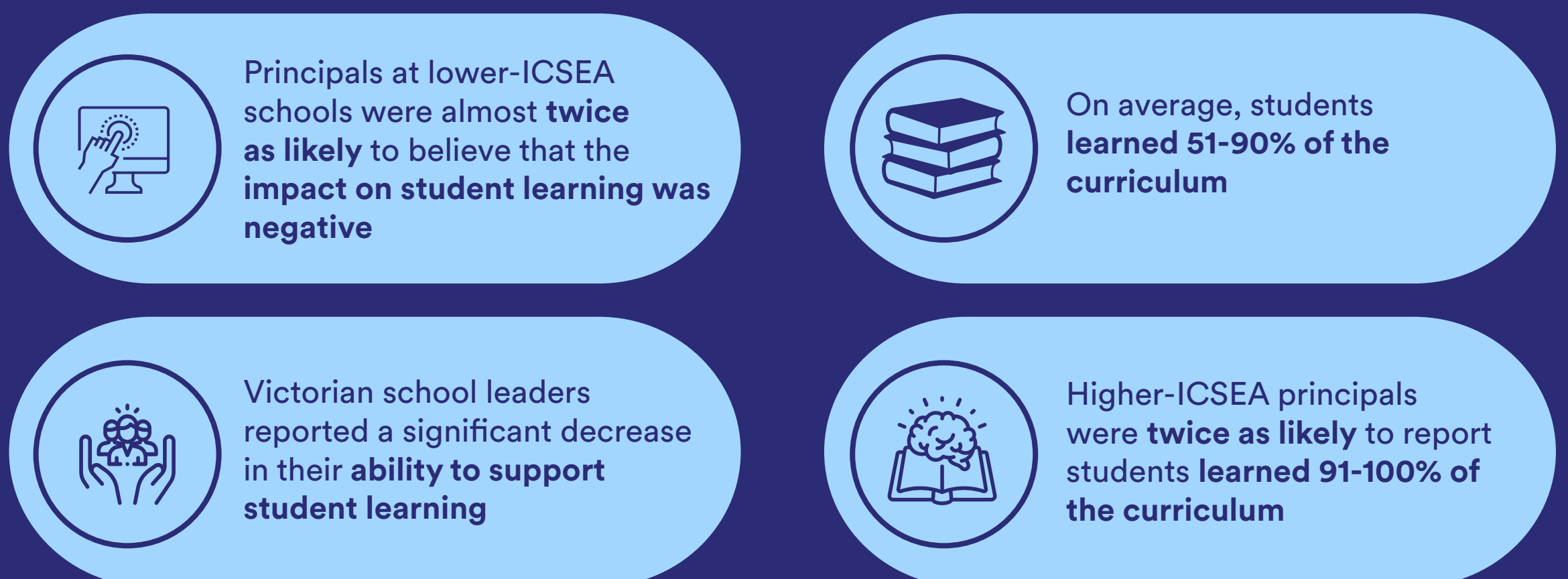
## Remote learning transition



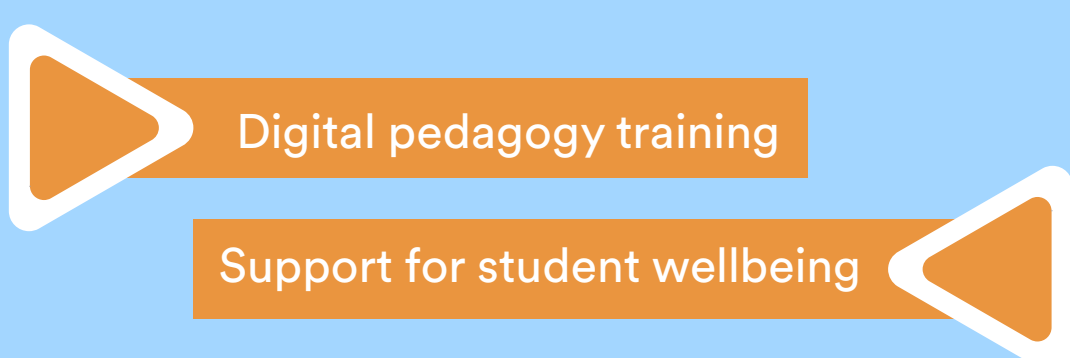
## Mental health of students



## Impact on student learning



## Requirements for future school closures



## Priorities for 2021 staffing investment

